

产品介绍 Product Introduction



ZB-K系列釜底泵：

ZB-K系列主要用于输送真空反应器中的中高粘度的介质，吸入口大法兰设计，在真空条件下能使高粘度介质顺利吸入。主要应用于ABS,PS,PMMA,PBT,PT等介质。

技术参数

泵体: 不锈钢, 碳钢, 哈氏合金, 蒙乃尔合金
齿轮: 渗氮钢, 工具钢, 特种材料及涂层
齿形: 为直齿、斜齿或人字齿
滑动轴承: 工具钢, 钛钽合金, 银镍合金, 特种材料及涂层
轴封: 机械密封, 填料+螺旋密封, 带冲洗液的组合密封
加热系统: 电加热
规格/流量范围: 0.5CC - 12000CC

ZB-K Series Melt Pump for Reaction Kettle:

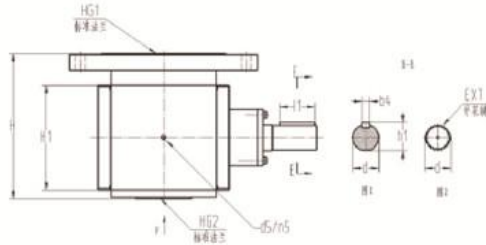
ZB-K series melt pump is mainly used for transporting medium or high viscosity medium out of the vacuum reaction kettle. On basis of large suction inlet flange design, the high viscosity medium is able to absorb inside under vacuum conditions. This series of melt pump is primarily applicable for ABS, PS, PMMA, PBT, PT, etc.

Technical Parameter

Material for Melt Pump Body: Stainless Steel, Carbon Steel, Hastelloy, Monel Metal
Material for Gear: Tool Steel, Nitrided Steel, Special Materials or Coating
Gear tooth types: Straight, Helical or Herringbone
Material for Sliding Bearing: Tool Steel, Titanium Tantalum Alloy, Silver Nickel, Special Materials or Coating
Shaft Sealing: Mechanical Sealing, Packing and Spiral Packing, Combined
Heating System: Electrical Rod Heating
Model/Volume Range: 0.5CC - 12000CC

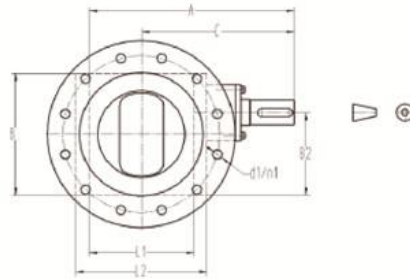


产品介绍 Product Introduction



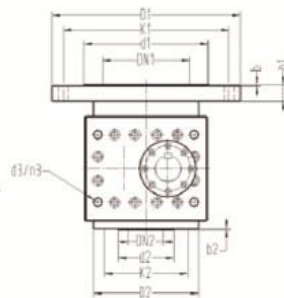
操作参数

粘度: ≤ 40000 Pa.s
温度: $\leq 400^{\circ}\text{C}$ (750°F)
清洗温度: $\leq 450^{\circ}\text{C}$ (850°F)
进口压力: 真空--1.5MPa
出口压差: ≤ 40 MPa



Operating Parameter

Viscosity: ≤ 40000 Pa.s
Working Temperature: $\leq 400^{\circ}\text{C}$ (750°F)
Cleaning Temperature: $\leq 450^{\circ}\text{C}$ (850°F)
Inlet Pressure: Vacuum--1.5MPa
Outlet Pressure ≤ 40 MPa



产品图片，参数仅供参考，请以实物为准

地址: 郑州高新区长椿路11号国家大学科技园
国内: +86-0371-67993077 67993177 国外: +86-0371-67991755